

二胡 II.

采茶调

♩ = 80

5

p *f* *p*

10

p

15

♩ = 160

8

25

f *ff*

ff

30

35

40

45

mp *p*

pizz

50

arco

f *p*

55

f *mp*

60

65

mp *f* *mp* *p*

70

mf *f* *ff*

75

80

85

90

95

f

ff

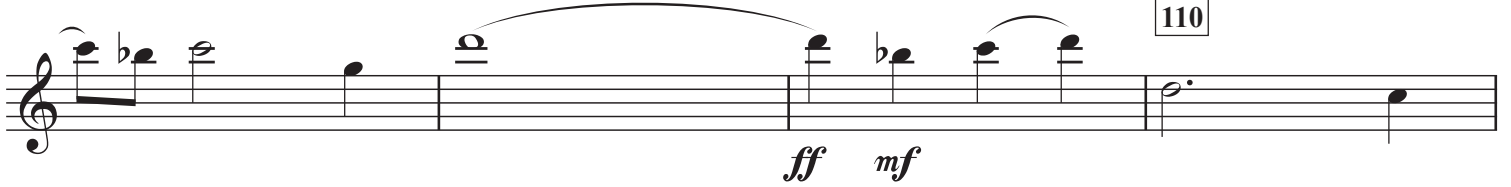
100



105



110



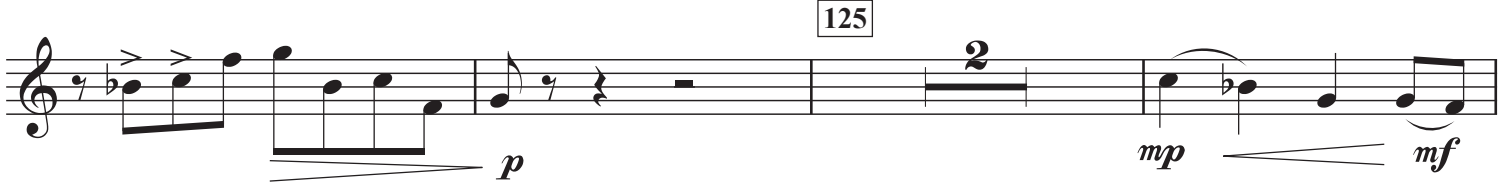
115



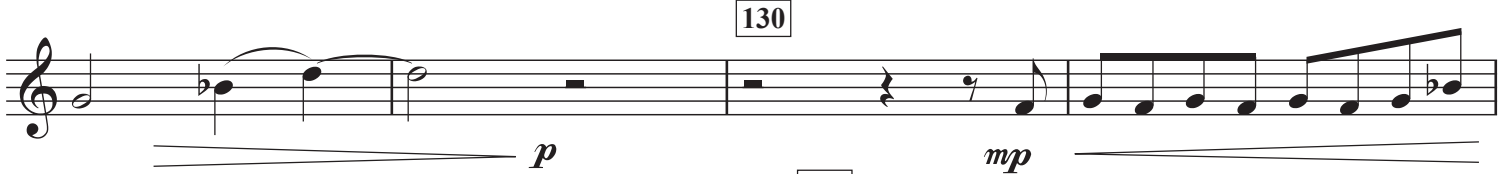
120



125



130



135



140

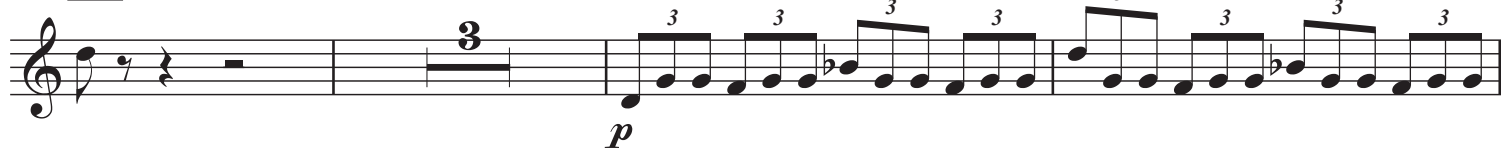


145

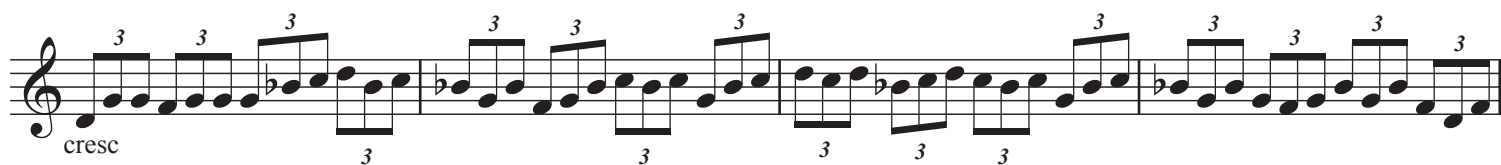




150



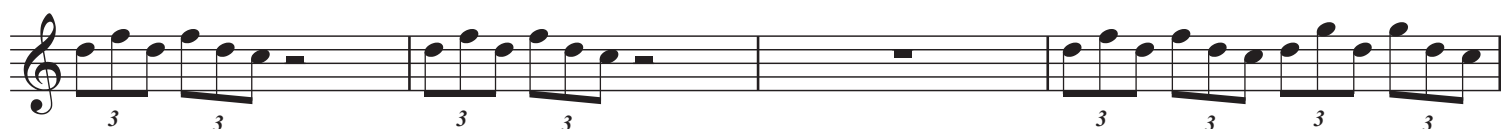
155



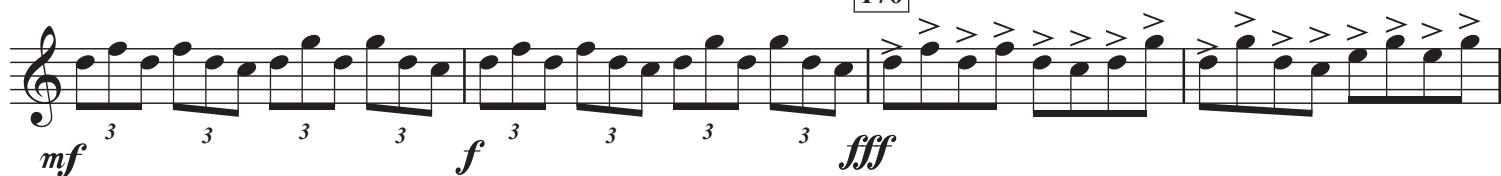
160



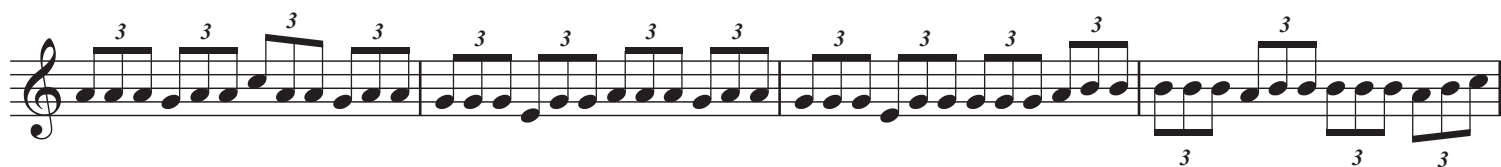
165



170



175



180



185



This musical score segment for 'The Swan' by Charles Ives, measures 190-225, is written for a single melodic line on a grand staff. The key signature is one sharp (F#), and the time signature is 4/4. The score is characterized by its complex, syncopated rhythms and frequent use of triplets. Measure numbers 190, 195, 200, 205, 210, 215, 220, and 225 are indicated in boxes above the staff. Dynamic markings include *ff* (fortissimo), *mp* (mezzo-piano), *f* (forte), and *sfp* (sforzando). A crescendo hairpin is present between measures 200 and 205, and a decrescendo hairpin is present between measures 210 and 215. The piece concludes with a final chord in measure 225, marked with a double bar line.